

Health Care for Kids - The People, The Map & The Measure

Children's Health Conference

FINAL PROGRAM

17 to 19 NOVEMBER 2008 :: Manly Pacific Hotel Sydney



Health Care for Kids



Health Care for Kids

- The People, The Map and The Measure

Children's Health Conference | 17 to 19 NOVEMBER 2008 | Manly Pacific Hotel Sydney

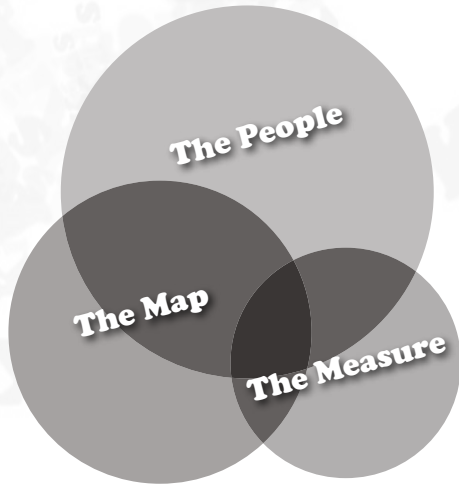
Contents

About the Conference.....	3
The Convenors	4
A Welcome Message from the Convenors	4
Sponsors	5
Conference (and other) Helpful Information	6
Conference at a Glance.....	9
Keynote Speakers	10
Detailed Program and Room Locations.....	11
Poster Presentations	16

About the Conference

Who Co-convened by Children's Hospitals Australasia (CHA) and the Association for the Wellbeing of Children in Healthcare (AWCH).

How The conference has three major themes: **The People, The Map and The Measure.**



- **'the people'** – in particular the shared concerns among health professionals and the families struggling with serious health issues;
- **'the map'** – contemporary trends and developments in healthcare practice, policy and environments; and
- **'the measure'** – how we can best monitor, evaluate and improve the safety and quality of health care delivered to children and young people.

We also want to explore these themes in the context of **common elements** across all themes:

- **Early intervention**
- **Culturally sensitive and appropriate services**
- **Working in partnerships**
- **Research, evaluation and continuous improvement.**

People
Engaging with, and listening to children and young people
Partnering with families: a family centred approach
Satellite services: responding to new needs and supporting families
Nurturing and invigorating our workforce

Map
The patient journey: continuity and transition, alternate care options
Physical and information healthcare environments
Innovations in illness prevention, health promotion and service delivery
Meeting the challenges in child and adolescent mental health
Meeting the challenges of chronic illness, cultural diversity and communication

Measure
Measuring and improving the quality and success of health care
Setting new standards

The Convenors



CHILDREN'S
HOSPITALS
AUSTRALASIA

The Children's Hospitals Australasia (CHA)

CHA is a not-for-profit organisation that supports children's hospitals and health services to achieve excellence in clinical care, through advocacy, networking and the sharing of knowledge & evidence underpinning best practice.



association for the wellbeing
of children in healthcare

The Association for the Wellbeing of Children in Healthcare (AWCH)

AWCH is a national not-for-profit organisation of parents, professionals and community members who work together to ensure the emotional and social needs of children, adolescents and their families are recognised and met within hospitals and the health care system in Australia.

A Welcome Message from the Convenors

On behalf of the CHA and AWCH Board, it is our pleasure to welcome you to ***Kids Health: the People, the Map, and the Measure***, the collaborative conference of Children's Hospitals Australasia (CHA) and the Association for the Wellbeing of Children in Healthcare (AWCH). The Conference is being held at this seaside venue to create a relaxing and invigorating learning and networking environment! This Conference provides a unique opportunity to hear expert speakers from USA, Australia and New Zealand and to share your ideas and solutions with similarly minded health professionals and community members from children's health services.

As we focus on children's health through the themes of ***the People, the Map, and the Measure***, we hope you will share concerns, examine contemporary trends and discuss how we can best monitor, evaluate and improve the safety and quality of health care delivered to children and young people. The conference provides an ideal opportunity to share multidisciplinary team and community approaches to the emerging challenges in child health.

We have in attendance delegates from all health professions, community organisations and parents involved in the care of children and young people, and will also hear from young people themselves.

We look forward to meeting old friends and making new ones at Conference!

Prof. Graham Vimpani
President Children's Hospitals Australasia

Prof. David Bennett
President AWCH

Joanna Holt
Chair of Organising Committee's/CEO Women's and Children's Hospitals Australasia

We acknowledge with thanks our generous sponsors and supporters to date:

Sponsors

- Hesta Super Fund
- NSW Commission for Children and Young People
- NSW Department of Health

Supporters

- MIMS Australia
- Manly Pacific Sydney managed by Novotel

Exhibitors

- CSL Pharmaceuticals
- Johnson and Johnson
- Device Technologies



Your Health & Community
Services Industry Fund



nsw commission for
children & young people

Conference Secretariat

Post	<i>Health Care for Kids Conference</i> PO Box 4242 Pitt Town NSW 2756
Tel	+61 2 4572 3079
Fax	+61 2 8580 5089
Email	sharynlow@pacific.net.au
Online	www.kidsconference.org.au

Conference and Other Helpful Information For You

Venue

All conference sessions and functions will be held at the Manly Pacific Sydney Hotel 55 Nth Steyne Manly.

Morning and afternoon teas and lunches will be held in the Gilberts room with seating on the terrace.

Please visit all the exhibitors and poster displays in the foyer and the Gilberts Room.

Plenary sessions are in the Ballroom and other sessions are in meeting rooms – 4 sections of the Ballroom divided into breakout rooms are (starting from the foyer) Clarendon, Norfolk, Cutler and Barton.

Our 5th Breakout room is Balgowlah – enter from the foyer.

All rooms are on Level 1 and access to L1 is via stairs or the lift.

Session times

Please note the Program commences each day at 9am sharp. Location of each session is printed in the detailed program pages.

Program times are:

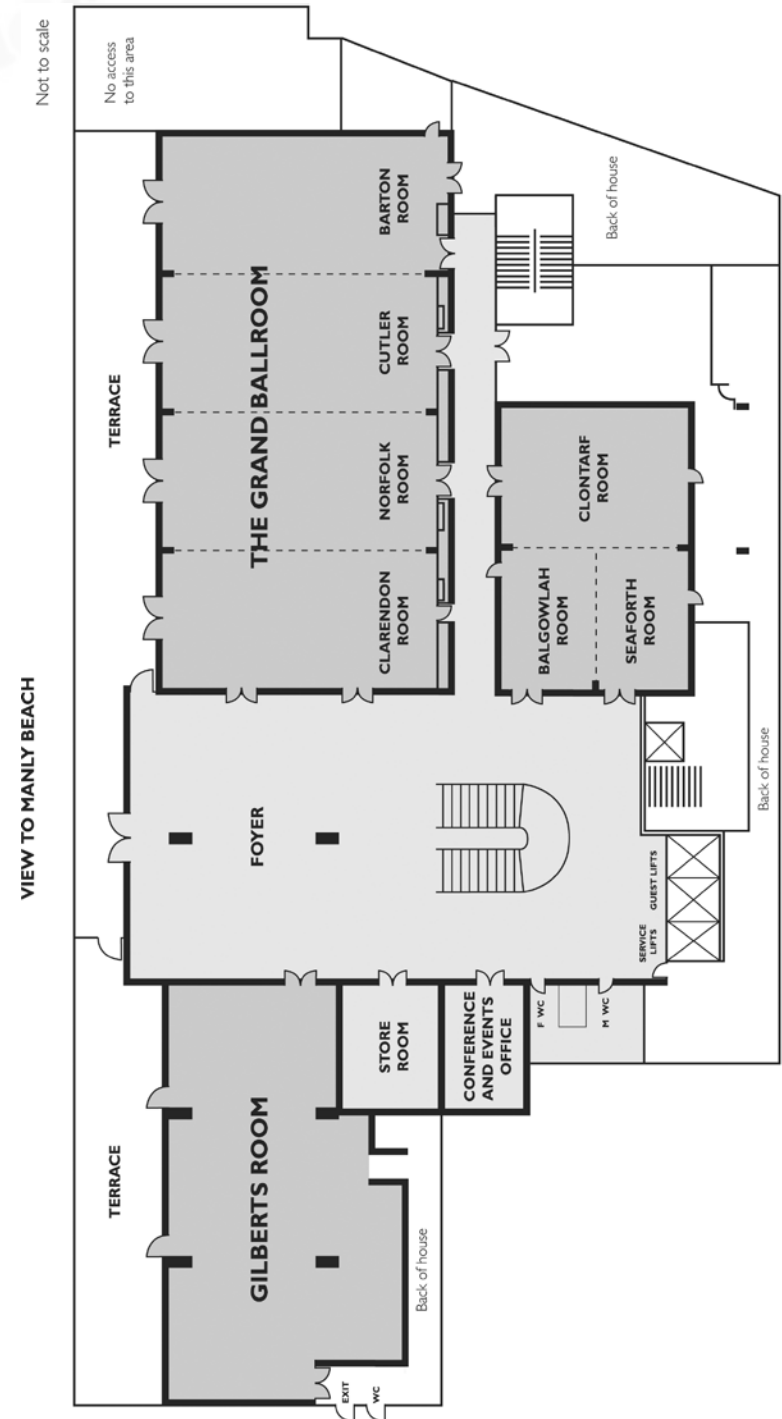
Monday 17 November	9am to 5pm conference sessions 6.30pm Interactive Poster Presentations and Pre-dinner drinks 7.30pm Conference Dinner
Tuesday 18 November	9am to 5pm. Conference sessions 5.30pm CHA AGM
Wednesday 19 November	Optional Half Day Workshops from 9am or 1.30pm

Registration desk hours

Monday 17 November	7.30am to 5.30pm
Tuesday 18 November	8am to 5.30pm
Wednesday 19 November	8am to 5.30pm

Nametags

Your nametag is essential for entry to all sessions so please wear it at all times. Your session choices are indicated on the reverse side of your tag. This also indicates if you have purchased a conference dinner ticket.



Conference and Other Helpful Information For You

For your maximum benefit and enjoymentplease note the following information:

Business facilities

Business services are available from the events Office on Level 1 or from Hotel Reception: local faxing for a fee of \$1.10 per transmission, copying @ 30c per page black/white. Internet access wireless cards can be purchased from Hotel Reception for Telstra Hotspot wireless connectivity on the conference floor. You may either log on to the Telstra website and pay through your credit card or purchase a wireless card from reception desk. The cards cost \$27.50 each and are valid for a maximum use of 8 hours within a 24 hour period.

Conference rooms

All conference sessions and functions are in the Manly Pacific Hotel and the program indicates the room location of each session.

Please see the map on page 6 for location of workshop rooms which are all located on Level 1.

Conference Secretariat

Conference Secretariat until 15 December 2008 - Sharyn Low & Associates

Tel +61 2 4572 3079

Fax +61 2 8580 5089

E mail sharynlow@pacific.net.au

On line www.kidsconference.org.au

and after conference www.awch.org.au and www.wcha.asn.au

Inquiries Sharyn Low

After 15 December 2008 please contact either

AWCH on Ph: + 61 (2) 9817 2439 E-mail: awch@awch.com.au

or CHA on Ph: + 61 (2) 6230 4400 E-mail: echatham@wcha.asn.au

Dinner Tickets

Entry is only by your nametag. Please check that you have confirmed your attendance and the reverse of your nametag has a 'YES' indicated.

Please check at registration desk if you are unsure. Dinner dress is smart casual.

Evaluation & Feedback

We will email you a questionnaire for feedback and evaluation after the conference and thank you in advance for completing this.

Exhibitors

Are located in the foyer – please visit our supporters and sponsors.

First Aid

Contact via registration desk or Hotel Reception.

Food and Special Dietary Needs

Morning and afternoon teas and lunches for the days of conference are included in your registration fees and will be served in Gilberts Room and the Foyer area. You are welcome to make use of the limited seating on the terrace.

Your special dietary needs have been advised to the Hotel as indicated on your registration form. Please identify yourself to one of the wait food and beverage staff at meal breaks.

Luggage

Can be left with Hotel Concierge.

Messages

Please check the board at registration desk in case there are messages for you.

Mobile Phones

Please ensure all mobile phones and pagers are switched OFF whilst in the conference sessions.

No Smoking

This conference is a smoke free zone in all areas for conference sessions. Smokers are requested to go to street level to smoke.

Proceedings

Any papers made available will be placed on a conference link on the host organisations websites www.awch.org.au and www.wcha.asn.au as they are forwarded by presenters.

Copyright – the information contained in papers and presentations is the opinion of the authors and speakers and not those of the conference hosts. As convenors for the conference, we accept no responsibility for the content of the papers. Please note that conference documentation is under copyright to the speaker/presenter and the conference hosts. Papers and abstracts may only be reproduced with specific permission.

Conference and Other Helpful Information For You

Questions

Where there is time available questions are encouraged through the facilitator of each session. Please state your name and the organisation you are from before posing your question. Questions can also be submitted in writing by passing to the facilitator.

Recording

The conference host organisations will be taking digital photographs, some audio recordings and digital video recordings of plenary sessions and selected other sessions.

These could be used on the host organisations publications and websites, the recordings as a record of conference proceedings.

If you do not wish to have your photo or audio recorded please complete the form at registration desk.

AWCH will be taking orders for the conference proceedings CD.

Restaurants and other nearby facilities

A copy of the Manly Visitors Guide is available for you from registration desk. Information on day tours, transport timetables etc is available at Hotel Reception:

The Hotel Restaurant Zali's is open from 6.30am to 10.30pm every day for all meals, coffee and snacks.

The new Charlie & Lobby Bar are open from 10am until late each day – snacks and meals for lunch and dinner.

Speakers Presentations

All presenters are asked to load their powerpoint presentation to the conference laptop at registration desk NO LATER THAN 8.30am on the day they are presenting. Questions regarding any technical matters can be asked of any AVCORP representatives via the technicians desk at the rear of the main plenary room.

Tax Invoices

Tax invoices were issued from the CVENT system when you registered. Please ensure you have the necessary paperwork as we can only re-send tax invoices until 30 November.

Organisation details for GST purposes:

Children's Hospitals Australasia (CHA)

ABN Children's Hospitals and Paediatric Units Australasia ABN 36 006 996 345

Post: PO Box 5004 Braddon ACT 2612 Australia

Offices: L1, 99 Northbourne Ave Turner ACT 2612

Ph: + 61 (2) 6230 4400

Fax: + 61 (2) 6230 6699

Transport and parking

Taxi rank is located near Manly Wharf or concierge can call one for you.

The Ferry terminal is a short 10 minute walk down the Corso Mall.

Limited secure car parking is available underneath the hotel for \$18 per day.

Telephones and ATM

Public telephones accepting coins can be found in hotel lobby (it does not accept phone cards or credit cards). Nearest ATM is hotel lobby.

Websites

For conference presentations and information after the conference please go to AWCH www.awch.org.au and / or CHA www.wcha.asn.au

AWCH will be taking orders for conference proceedings sound recordings of keynote presentations and some other selected sessions.

Conference at a Glance

	Monday 17th November 2008	Tuesday 18th November 2008	Wednesday 19th November 2008 1/2 Day Workshops	
8:30am	Arrival Coffee & Exhibits		Arrival Coffee & Exhibits	
9am - 10:30am	Opening Plenary & Keynote presentations - Ballroom <ul style="list-style-type: none"> Welcome Indigenous Welcome to Country Conference opening – Prof. John Yu Opening Keynote Address – Hugh Mackay - <i>The hazards for children in a low-birthrate, high-anxiety society</i> Keynote Presentation – Jeremy Medlock - Young Person, Mr Medlock - Parent, Health Care Provider 	Plenary & Keynote presentations - Ballroom <ul style="list-style-type: none"> Keynote Address - Dr Charlie Homer NICHQ USA <i>A Vision for Child Well Being in the 21st Century: The Role of Health Care, Quality, and Safety.</i> Keynote Address – Karen Wayman - Family Centred Care USA <i>The Next Generation of Family Centered Care: A Time of New Opportunities Creates a Need for New Standards & Supports.</i> 	Workshop A <ul style="list-style-type: none"> Dr Charlie Homer <i>Quality and Safety workshop</i> Clarendon Room 	Workshop B <ul style="list-style-type: none"> Peter Slattery <i>– engaging with children and young people</i> Norfolk room
10:30am - 11am	Morning Tea		Morning Tea	
11am - 12:30pm	Concurrent Sessions : Papers & Workshops <ol style="list-style-type: none"> The PEOPLE: Family Advisory Councils – <i>family centred approaches</i> – Clarendon Room The PEOPLE and The MAP : <i>Cultural Diversity</i> – Norfolk Room The MAP: <i>Illness Prevention and Health Promotion</i> – Balgowlah Room The MAP: <i>The Physical and Informational Health Environment</i> – Cutler Room The MEASURE: <i>Measuring Quality and Success</i> – Barton Room 	Concurrent Sessions : Papers & Workshops <ol style="list-style-type: none"> The PEOPLE/ and The MAP: <i>Navigating Chronic Illness</i> – Clarendon Room The MAP: <i>Improving the healthcare journey</i> – Norfolk Room The PEOPLE: <i>Satellite services - responding to new needs and supporting families.</i> - Cutler Room The PEOPLE: <i>Nurturing and invigorating our workforce</i> – Barton Room The MAP: <i>Mapping transition to ensure safe arrival</i> - Balgowlah Room 		
12:30 - 1:30pm	Lunch		Lunch	
1:30pm - 3pm	Concurrent Sessions : Papers & Workshops 1.30pm to 3pm <ol style="list-style-type: none"> The PEOPLE: <i>Parents at the Bedside: Expert Partners in Care</i> – Clarendon Room The PEOPLE and THE MAP: <i>Providing Directions</i> – Norfolk Room The MAP: <i>Promoting child health through Parenting Support</i> – Cutler Room The MAP: <i>Mental Health Challenges for children and families</i> – Balgowlah Room The MEASURE: <i>Sharing Improvement Strategies</i> – Barton Room 	Concurrent Sessions: Papers 1.30pm to 3pm <ol style="list-style-type: none"> The PEOPLE: <i>Listening and engaging with children and young people.</i> – Clarendon Room The PEOPLE: <i>Essential support services for families and their children in healthcare</i> – Balgowlah Room. The MAP: <i>Plotting a different journey - alternate care options</i> – Norfolk Room The MAP: <i>The road map for families of children with chronic illness</i> – Cutler Room The MEASURE: <i>Setting new standards</i> – Barton Room 	Workshop C <ul style="list-style-type: none"> <i>Paediatric Clinical Guidelines</i> Clarendon Room 	Workshop D <ul style="list-style-type: none"> Dr Karen Wayman <i>– Family Centred Care</i> Norfolk Room
3pm - 3:30pm	Afternoon Tea		Afternoon Tea	
3:30pm - 5pm	Plenary Session 3:30pm - 5pm <ul style="list-style-type: none"> Young People's Panel 	Closing plenary - 3.30pm to 5pm <ul style="list-style-type: none"> Keynote Address – Dr Lis Murphy NSW Health Keynote Address – Dr Christine Bennett Commissioner of the National Health & Hospitals Reform Commission LAUNCH National Standards – Gillian Calvert NSW Commission for Children & Young People Response – Jenny Proimos RACP Division Paediatric and Child Health Closing and thanks – Presidents AWCH and CHA 		
	Interactive Poster Session - 6.30pm to 7.30pm including pre dinner drinks and nibbles - Gilbert Room 7.30pm to 10.30pm Dinner – Ballroom & Terraces – Speaker Prof. Kim Oates		5pm Close CHA AGM 5.30pm to 6.30pm Norfolk Room	

Keynote Speakers



Dr Christine Bennett is Chief Medical Officer of Bupa Australia and Commissioner of the National Health and Hospitals Reform Commission.

Dr Bennett has over 25 years of health industry experience in clinical care, strategic planning and senior management including Chief Executive at Westmead – Australia's largest teaching hospital.

In April 2008, Dr Bennett was appointed by the Prime Minister Kevin Rudd to be Commissioner of the National Health and Hospitals Reform Commission that will provide advice on performance benchmarks and practical reforms to the Australian health system to be implemented in both the short and long term.



Hugh Mackay is a psychologist, social researcher and the author of eleven books. He has made a life-long study of the attitudes and behaviours of the Australian community and is one of the pioneers of qualitative social research in this country, having undertaken his first experiments with qualitative methodology in 1962. He is currently an adjunct professor in the Centre for Applied Philosophy and Public

Ethics. He writes a weekly column for the Sun-Herald and the West Australian, and occasionally for the Sydney Morning Herald and The Age. He is also a frequent broadcaster on ABC radio.



Associate Professor Colleen Hayward is Manager, Kulunga Research Network Telethon Institute for Child Health Research. She is a senior Noongar woman with family ties throughout the South-West of Western Australia. She has an extensive negotiation, advocacy, policy and management background in a range of government and non-government areas and was previously deputy

Chief Executive Officer of the Aboriginal Legal Service of WA. Other experience covers areas including health, education, training, employment, housing.



Dr Charles J. Homer is a founder and the Chief Executive Officer of the National Initiative for Children's Healthcare Quality (NICHQ), Inc., a non profit organization focused exclusively on improving quality of health care for children. Dr Homer is also a pediatrician and serves as an associate professor of the Department of Society, Human Development and Health at the Harvard University School of Public

Health and an Associate Clinical Professor of Pediatrics at Harvard Medical School.



Jeremy Medlock is nineteen, currently studying in his second year of Animal and Veterinary Bioscience at the University of Sydney. He was diagnosed with cancer on his sixteenth birthday in 2004, and spent 2005 undergoing chemotherapy at The Children's Hospital at Westmead

Dr Elisabeth Murphy is Senior Clinical Advisor for Maternity and Child Health, NSW Department of Health and the Area Director of Child and Family Health, North Sydney Central Coast AHS. Dr Murphy held the position of Foundation Chairman of the Faculty (now Chapter) of Community Child Health .from 1990-1996 and the chairman of the Policy Review Committee of the Division of Child Health (RACP) from 1996- 2002. She has been a member of many ministerial committees including the Ministerial Committee for Maternal and Perinatal Committee from 1990, Ministerial Standing Committee for Hearing, since 2004 and a member of the NSW Child Death Review Team since 2000.



Prof. Kim Oates is a paediatrician with particular interests in child development, child protection and hospital administration. He held the foundation Douglas Burrows Chair of Paediatric and Child Health at the University of Sydney from 1985 to 1997. He was Chief Executive of the Children's Hospital at Westmead from 1997 to 2006.



Dr Karen Wayman is a child development specialist who has worked with children and families in hospital settings since 1985. Since 2000 she has overseen implementation of Family Centered Programs at Packard Children's Hospital. In 2005 she was appointed Packard Children's Hospital Endowed Director of Family Centered Care. She has experience in developing effective approaches to implementing

family centered practices in both the clinical and policy areas of health care and she provides extensive training to hospitals throughout the US and Canada on best Family Centered Care practices.

Conference Program Monday 17th November 2008

Arrival Coffee & Exhibits 8:30am

Opening Plenary & Keynote presentations - **Ballroom**

Chairperson Prof. David Bennett

- Welcome by Chairpersons AWCH Prof. David Bennett and CHA Prof. Graham Vimpani
- Welcome to country by the Traditional owners: *the Cannalgal (can-na-gal) and Kayimai (cam-a-ra) Clans of the Guringai (gurin-guy) Nation - Carolyn Glass Pattison Community Member, Guringai Nation.*
- Conference opening – Prof. John Yu
- Opening Address – Hugh Mackay: *The hazards for children in a low-birthrate, high-anxiety society*
- Keynote Presentation – *Three viewpoints on the people, the map and the measure.*
 1. **A Young Person - Jeremy Medlock, A Teenager's Perspective.** My family and I were devastated when, as a 16 year old, I was diagnosed with cancer. Now, three years later, I look back and reflect on the hospital system which became our home and my life for 12 months. The system offered us so much care and hope, but could also, at times, be stifling and impersonal.
 2. **A Parent – Peter Medlock, and**
 3. **A Health Care Provider - The Oncology Department, Children's Hospital Westmead.**

9am
-
10.30

Morning Tea 10:30 - 11am

Session 1. Clarendon Room

The PEOPLE: Family Advisory Councils – family centred approaches
Chair - Lizzy Hamett

- 1.1 > Finding a Voice: The Birth of a Family Advisory Council at The Royal Children's Hospital**
A two-pronged presentation by the Hospital's Family Centred Care Consultant and Family Advisory Council Chair (a parent) exploring the ups and downs, successes and challenges of the Council's first year.
Ms Julie Hall, and Susan Biggar, The Royal Children's Hospital. VIC
- 1.2 > Tribulations & Triumphs – Making Partnership Really Work!** This presentation will look at the tribulations and triumphs of developing a successful working relationship between family representatives and hospital staff in a major children's hospital.
Mrs Jenny Bucco, The Children's Hospital at Westmead. NSW
- 1.3 > A Day In The Life Of A Family Advisory Council.** This will be a multi-media presentation consisting of a short film focussing on the personal stories of members of The Children's Hospital at Westmead and Family Advisory Council.
Ms Lizzy Hamett, The Children's Hospital at Westmead. NSW
- 1.4 > Family Advisory Panel of the above presenters and other parents.**

Session 2. Norfolk Room

The PEOPLE and The MAP : Cultural Diversity
Chair – Dr Bruce Lord

- 2.1 > Refugee children and their medical needs – an Illawarra experience.** Analysis of 1-year's data of Refugee Children settling in Illawarra, who are seen in a novel GP-tertiary Refugee Health screening model.
Dr Alaric Koh, Sydney Children's Hospital, Community Child Health. NSW
- 2.2 > The fundamentals of culturally competent health promotion with newly-arrived African parents: understanding values, beliefs and social processes.** This paper details empirical research investigating the role that literacy plays for parents in the development of their health-related knowledge and presents a framework for policy and practice that addresses literacy in a health promotion context.
Dr Andre Renzaho, Dr Julie Green, Lara Williamson, Maurice Eisenbruch, Elizabeth Waters, Frank Oberklaid, Lynn Holt, Royal Children's Hospital Education Institute. VIC
- 2.3 > A Cross Cultural Consultant Paediatric Mental Health Service.** This paper will describe the outcomes and benefits of a pilot clinical cultural consultant service model. These include education, institutional change, improving clinical outcomes and clinical research.
Dr David Dossetor, The Children's Hospital at Westmead. NSW
- 2.4 > Cultural diversity at work: staff negotiating difference at two children's hospitals in Sydney.** Findings from cultural research conducted as two children's hospitals in Sydney have important implications for policy and practice.
Professor Les White, Sydney Children's Hospital, Dr Bruce Lord and Clinical Professor David Bennett, The Children's Hospital at Westmead. NSW

Session 3. Balgowlah Room

The MAP: Illness Prevention and Health Promotion
Chair – Dr Pat Tuohy

- 3.1 > Early Childhood Oral Health Program: a collaborative model for early intervention.** The Early Childhood Oral Health Program is an early intervention program that encourages child health professionals to regularly check for signs of Early Childhood Caries by 'lifting the lip' and looking inside the mouth.
Ms Claire Phelan, Centre for Oral Health Strategy NSW.
- 3.2 > A magpie, a stick and an eye injury – the Australian situation.** This presentation will outline recent research which has identified the prevalence of childhood eye injuries treated at The Children's Hospital Westmead, providing personal accounts from eye injured children and their families, and prevention programs being developed to combat childhood eye injury.
Mrs Sue Silveira, Children's Hospital at Westmead. NSW.
- 3.3 > Unique Training Package: e-learning program and tutorial on Smoking Cessation Interventions for Health Professionals.** Innovations in Health Promotion: e-learning package.
Mrs Tracey Marshall, The Children's Hospital at Westmead, Respiratory Medicine. NSW
- 3.4 > The On-Line Paediatric Junior Medical Officer Orientation Program.** We discuss the development, implementation and early outcomes of an on-line orientation program that delivers common paediatric orientation modules to Junior Medical Officers (JMOs) attached to GESCHN (Greater Eastern & Southern Child Health Network) hospitals in NSW; these basic paediatric modules complement their face-to-face orientation to the Paediatrics Department of their hospital.
Richard Thode, Greater Eastern & Southern NSW Child Health Network (GESCHN). NSW

Session 4. Cutler Room

The MAP: The Physical and Informational Health Environment
Chair – Val Wilson

- 4.1 > Mapping the future of child health and wellbeing: a spatial approach.** A presentation about how spatial sciences can inform and improve child health and social care. Hamish Robertson, Health GISciences P/L. NSW
- 4.2 > Through children's eyes: Understanding how to create supportive healthcare environments for children and young people.** This paper presents findings from PhD research into children's experience of a paediatric hospital environment and discusses the participatory research methods used.
Kate Bishop, AWCH. NSW
- 4.3 > Web-based medical records. Are we ready?** A multicentre study into the attitudes of Australian families toward implementation of an internet accessible, electronic medical record for a paediatric population.
Dr Kimberly Johansen, Dr S. Khurana Department Paediatric Surgery, Women's and Children's Hospital. SA and P.Gera, J. Logan, J. Orford, Princess Margaret Hospital Perth, D. Preen, University of Western Australia Dept. of Population and Health Studies. WA

Session 5. Barton Room

The MEASURE: Measuring Quality and Success
Chair – Cheryl McCullagh

- 5.1 > Long term improvements in medication safety in a paediatric hospital: the science to support the policy and practice of Quality Use of Medicines.** Success with our medication safety improvement model over a 4 year period involved implementing safe prescribing and paracetamol guidelines, multi-faceted interventions and the ability to measure medication-related error and harm.
Dr Madlen Gazarian, Ms Linda Graudins. UNSW and Sydney Children's Hospital, Randwick. NSW
- 5.2 > Quality Use of Medicines and children: on the cusp of a brand new era.** This paper will discuss recent global and national developments in paediatric medicines, which provide opportunities and challenges for closing the long-standing gaps in paediatric Quality Use of Medicines (QUM).
Dr Madlen Gazarian, UNSW and Sydney Children's Hospital Randwick. NSW
- 5.3 > Keeping the blood flowing.** A quality improvement project focusing on the administration of Warfarin on a paediatric cardiac ward.
Helen Knight, Gabrielle Scarfe, Kate Dengler, The Children's Hospital at Westmead. NSW
- 5.4 > The Children's dashboard – monitoring the quality of hospital processes and outcomes.** Children's Hospitals Australasia. ACT

11am - 12:30pm
Concurrent Sessions : Papers & Workshops

Conference Program Monday 17th November 2008

Lunch 12:30 - 1:30pm

Session 6. Clarendon Room

The PEOPLE: Partnership
Chair – Merron Howard

Parents at the Bedside: Expert Partners in Care

This workshop will identify solutions to key issues highlighted in the presentations by giving parents and healthcare professionals the opportunity to practice working in partnership.

Jan Hatch and parents, Association for the Wellbeing of Children in Healthcare (AWCH). NSW

Session 7. Norfolk Room

The PEOPLE and THE MAP: Providing Directions
Chair – A/Prof. Graham Reynolds

7.1 > Exploring general practice as a new partner in improving the health and well-being of children and young people entering out-of-home care in Victoria.

This paper presents the findings of a qualitative study of General Practitioners' views about becoming involved in comprehensive health assessments for some of Victoria's most vulnerable children; those entering out-of-home care.
Susan Webster, General Practice Victoria and University of Melbourne. VIC

7.2 > Enhancing Paediatric Burn Management Care Closer to Home.

A 24 month Project established by the Western Child Health Network, to improve the management of children with a burn injury, presenting to Emergency Departments in NSW.
John Harvey, The Children's Hospital at Westmead and Western Child Health Network. NSW

7.3 > Developing a Model of Integrated Child Development Assessment.

Results of a 2 year project aimed at improving access to child development assessment services within an Area Health Service.
Miriam Johnston, Sydney South West Area Health Service (funded by Western Child Health Network). NSW

7.4 > The burden of rare childhood diseases: How is Australia responding?

A review of international responses to the burden of rare childhood diseases, including research, policy and family support.
Dr Yvonne Zurynski, Australian Paediatric Surveillance Unit, The Children's Hospital at Westmead. NSW

Session 8. Cutler Room

The MAP: Promoting child health through Parenting Support
Chair – Prof. Graham Vimpani

8.1 > Promoting children's health by working with the 'real life' literacy of parents from diverse educational, social and cultural backgrounds.

This paper details empirical research investigating the role that literacy plays for parents in the development of their health-related knowledge and presents a framework for policy and practice that addresses literacy in a health promotion context.
Dr Julie Green, Royal Children's Hospital Education Institute. VIC

8.2 > Healthy Families a TEAM approach

"together everyone achieves more". A collaborative network promoting healthy family lifestyle strategies addressing locally identified community needs.
Tammy Makin, Shoalhaven Childhood Obesity Network. NSW

8.3 > Evaluation of Parent-Child Interaction Therapy: Delivered in Community Early Childhood Clinic Setting.

This paper will report results from a study that evaluated outcomes of Parent-Child Interaction Therapy (PCIT), a short-term, evidence based parent training intervention used widely in the treatment of behaviourally disordered preschool-aged children, delivered to families in an Australian community-based early childhood clinic setting.
Mrs Susan Morgan, Karitane .NSW

Session 9. Balgowlah Room

The MAP: Mental Health Challenges for children and families
Chair – Phil Robinson

9.1 > Exploring Perceptions of a Youth Early Psychosis Program.

Understanding the multiple service needs for a youth early psychosis program.
Dr Wendy Cross, Monash University. VIC

9.2 > Parental mental illness: Families informing families.

Involving families affected by parental mental illness in the development of resources for other families in similar situations.
Elizabeth Fudge, Australian Infant Child Adolescent and Family Mental Health Association and Ms. Colleen Sincok. SA

9.3 > Kids of Parents Living with Mental Illness: project implementation.

This paper describes the challenges, the strategies utilized, and some achievements thus far in a project where two services are collaborating to translate national Children of Parents with a Mental Illness (COPMI) guidelines into practice within organisationally separate Child & Youth and Adult mental health service settings.
Ms Catherine Renkin, Princess Alexandra Hospital Division of Mental Health Services and Ms Maggie Wilson, Mater Children's Hospital Kids In Mind . QLD

9.4 > KIDZ Club.

An early Intervention and Educational Group for Primary Children living with a relative with a Mental Illness. This presentation will provide participants with a vignette of some creative group activities used in the Kidz Club holiday workshops.
Ms Maggie Wilson, Mater Children's Hospital Kids In Mind. QLD

Session 10. Barton Room

The MEASURE: Sharing Improvement Strategies
Chair – Joanna Holt

10.1 > Establishing a state-wide Paediatric Palliative Care program in WA.

Overview of the processes undertaken to establish a new state-wide PPC program in WA and review of the first few months.

Stephanie Dowden, Princess Margaret Hospital for Children. WA

10.2 > Bedside handover – implementing and evaluating change.

Recent evidence supports the collaborative practice of bedside handover – this project evaluated the staff and consumer experience of this change in practice.
Theresa Clemens, Mei Ling Yeh, Dr Sharon De Graves, Shirley Burke, The Royal Children's Hospital, Melbourne. VIC

10.3 > Accidental Discovery: Different people, different maps but the same measure!

The measurement of families and nurses experience of living and working in a paediatric oncology hospital environment using two different methodologies has generated similar data indicating core themes and a shared perspective.

Susan Dyer, Department of Nursing/Midwifery Research & Practice Development; Department of Clinical Haematology/Oncology, Women's & Children's Hospital, Adelaide. SA

10.4 > The ABCD of discharge planning.

A pre and post evaluation of discharge planning was performed to evaluate an intervention that aimed to enhance the discharge process at a tertiary paediatric oncology centre.

Karen Egan, The Royal Children's Hospital, Melbourne. VIC

Afternoon Tea 3- 3:30pm

Plenary Session 3:30pm - 5pm. Ballroom

Chair – Michelle Casey
• Young People's Panel

Interactive Poster Session - 6.30pm to 7.30pm including pre dinner drinks and nibbles.

See page 13 & 14 for full details on over 30 poster presentations

7.30pm to 10.30pm Dinner – Ballroom & Terraces

Speaker Prof. Kim Oates: The great thing is, you can give them back

Concurrent Sessions : Papers & Workshops

1.30pm - 3pm

3pm - 5pm

Conference Program Tuesday 18th November 2008

Arrival Coffee & Exhibits 8:30am

Plenary and Keynote presentations – **Ballroom**

Chair : Prof. Graeme Vimpani

- **Keynote Address - Dr Charlie Homer National Institute for Child Health Quality USA**

A Vision for Child Well Being in the 21st Century: The Role of Health Care, Quality, and Safety. What will it take to truly make our nations great places for children; what role does health care play in making this come to pass; and how a focus on quality and safety is an essential element of that role.

- **Keynote Address – Karen Wayman Family Centred Care USA**

The Next Generation of Family Centered Care: A Time of New Opportunities Creates a Need for New Standards & Supports. As FCC grows in acceptance in health care settings so does the need for a set of standards. Parents involved in Family Centered Care (FCC) Program are now being asked to participate in the patient safety agenda; in quality initiatives; to sit on boards; to provide clinical support through peer mentoring. These new opportunities represent a shift in the work of FCC parents—from one of advisory to that of partner. But this shift to partner brings new responsibilities as well as challenges. This presentation will examine some of the new opportunities in quality and patient safety—providing exemplars from Packard Children's Hospital regarding innovative ways to use the powerful parent story. Concomitantly, a set of FCC "standards" will be proposed that addresses the role of the parent participant; the infrastructure of the FCC program and the need for evidenced-based work.

Morning Tea 10:30 - 11am

Session 11. Clarendon Room

The PEOPLE/ and The MAP: Navigating Chronic Illness

Chair – A/Prof Graham Reynolds

11.1 > Finding a New Normal - one family's experience of navigating life with a child diagnosed with a Chronic Illness [from birth to teens]. A presentation describing what we have learned along the way. Insights that may help other families and practitioners in partnership.

Kathryn Henry, Member of The Association for the Wellbeing of Children in Healthcare (AWCH). NSW

11.2 > Growing up the hard way. A young person's perspective on living with complex developmental disorders and medical conditions during the transition into adulthood. A glimpse into the life and experiences of a young adult growing up affected by pervasive developmental disorders and medical conditions and a consideration of his family's life.

Mr Jacob Proctor-Compton. NSW.

11.3 > Reflections of a psychologist, mother and researcher living with, stressed by and rejoicing in the raising of children with complex developmental and medical presentations. A psychologist, mother and researcher's reflections on raising, managing and caring for children diagnosed with serious illness, developmental and chronic medical conditions, and engaging with the Australian health care system. Dr Marie-Thérèse Proctor, School of Psychology, University of Western Sydney & Oncology Dept, Children's Hospital at Westmead, Australian College of Ministry & Australian Centre for Studies in Spirituality. NSW

11.4 > Bumps, bypass and beyond: sculpting the Nurse Specialist role to fit family needs. Families with a congenital heart child face many stressors and move through a range of health services, the children's cardiac nurse specialist provides a consistent, expert support for them throughout their journey. Mrs Rosalie Charman, Starship Children's Hospital, Auckland District Health Board. New Zealand.

Session 12. Norfolk room

The MAP: Improving the healthcare journey

Chair – Sue Hawes

12.1 > Children's Orders: The Patient Journey Guiding Clinical Redesign.

Report on a clinical Redesign Project that aimed to identify and maximize opportunities for co-ordinating and streamlining the journey for patients who required booked investigations and achieve a timely and efficient investigation service.

Anna Rozario, The Children's Hospital at Westmead. NSW

12.2 > Through a Child's Eyes: The child's experience of an assessment diagnostic process.

This paper presents the results of current research exploring the experiences and understandings of children undertaking a developmental assessment and diagnostic process.

Ms Jordana Rigby, Child Development Program, Qld Health, in collaboration with Dr Rose Melville, University of Qld. QLD

12.3 > Because I never had an operation before.

This paper presents findings from current research that explores children's admission to hospital for surgery from the perspective of children themselves. Ms Karen Ford, School of Nursing and Midwifery, University of Tasmania & Royal Hobart Hospital. TAS

12.4 > 'Ya gonna do what????!!!' This presentation will stimulate discussion and thinking around the issue of preparation for invasive health care procedures and the implementation of evidence based preparation strategies to enhance the experience of hospitalisation for children and families.

Ms Bronwyn Gordon, UTS Sydney. NSW

Session 13. Cutler Room

The PEOPLE: Satellite services - responding to new needs and supporting families.

Chair – Jill Weeks

13.1 > Saving MINDS and BODIES. An overview of the educational implications for children recovering from serious illness and the work of the Ronald McDonald Learning Program in tailoring programs to address these issues.

Mrs Tracey Webster, Ronald McDonald House Charities. NSW

13.2 > Redkite Telegroups: keeping families connected when transitioning from hospital to their local community. Telegroups are part of

the range of innovative and accessible community services Redkite has developed to provide support for young people diagnosed with cancer and their family members as they transition from acute hospital care back home and to their local community. Ms Leigh Kurth, Linda Brown Redkite. QLD

13.3 > I Never Get to Be a Ballet Mum: the needs of children, young people and families living with serious and chronic illness. Overview of the findings of a needs analysis project, linking research to practice.

Felicity McMahon, Starlight Children's Foundation. VIC

13.4 > Positive Kids Camp. The Australian experience of HIV positive kids camps for adolescents and primary aged children.

Ms Stephanie Raper, Danielle Thompson, Sydney Children's Hospital. NSW

Session 14. Barton Room

The PEOPLE: Nurturing and invigorating our workforce

Chair – Annette Solman

14.1 > Child Health Networking to Support Allied Health Professionals. This presentation will detail the strategies implemented and outcomes of the 'Supporting Allied Health Professional Working with Children' projects undertaken by the three NSW Child Health Networks

Ms Carmel Blayden, Western NSW Child Health Network. NSW

14.2 > Skills in Paediatrics (SKIP): The development, implementation and evaluation of a multidisciplinary paediatric education program.

A two year paediatric education project for Ryde, Hornsby, Gosford and Wyong Hospitals, to create a sustainable training resource, funded through the Western Child Health Network.

Beverley Greenwell and Dr. Wendy Allen, Hornsby Hospital. NSW

14.3 > Effective feedback: An essential ingredient for success in building workforce capacity. Paying attention to quality by energising, engaging and developing the workforce.

Helen Woollett, Royal Children's Hospital & Health Service District. QLD

14.4 > Improving Clinical Practice from within using the 'Teamwork Learning Change' framework. This paper will describe a three year

research project aimed at realising an espoused philosophy of family centred care in practice. Margaret Kelly, Claudia Green, Lorraine Daoud, The Children's Hospital at Westmead. NSW

Session 15. Balgowlah Room

The MAP: Mapping transition to ensure safe arrival.

Chair – Val Wilson

15.1 > Mapping the journey for young people in transition – where are they going and what are the challenges? This paper maps the patient journey for young people with chronic illness / disability once they leave paediatric services and highlights some of the challenges they face though the experiences of a young person.

Lynne Brodie, Greater Metropolitan Clinical Taskforce NSW Health. NSW

15.2 > Matchmaker, Facilitator, Negotiator: Skills required to complete the Transition puzzle.

A Canadian experience provided a practical opportunity for an Australian nurse to improve the pathways for adolescents with any chronic condition to move successfully from paediatric to adult health care. Ms Felicity Sloman, Bloorview Kids Rehab, Toronto Canada

15.3 > Transitions in Care. Improving the experiences of young people, their families and clinicians during transfer of care from paediatric to adult facilities using critical creativity.

Kirriy Rodgers, Prince of Wales Hospital. NSW

15.4 > Creativity – An Aspect of Health.

Engagement in the creative process and arts offers children and young people, facing serious illness with frequent disruption to their education and social development, the opportunity to be involved in continued development.

Helen Zigmund, Creative Well and Clacia. NSW.

9am
10:30

11am - 12:30pm Concurrent Sessions: Papers & Workshops

Conference Program Tuesday 18th November 2008

Lunch 12:30pm - 1:30pm

1:30pm - 3:30pm Concurrent Sessions: Papers & Workshops

Session 16. Clarendon Room

The PEOPLE: Listening and engaging with children and young people.
Chair – Kate Bishop

16.1 > My Say – kids have their say on the design of a world class hospital for kids. Young people in Queensland have been central to the process of designing a hospital for children and young people. This presentation is a case study of their current and continuing involvement in a \$1.1 billion development project.

Mr Sam Brookfield and other young people, Royal Children's Hospital, Brisbane. QLD

16.2 > It Is Difficult To Engage Children & Young People In Decision Making - Myth Or Fact?

This presentation will challenge the concept that it is difficult to involve children and young people in decision making and encourage participants to think of practical ways to involve them in future work.

Mellita Kimber, Children, Youth and Women's Health Service. SA.

Session 17. Balgowlah Room

The PEOPLE: Essential support services for families and their children in healthcare.
Chair – Anne Cutler

17.1 > Nurturing : The Parallel Process Underlying the AWCW Ward Grandparent Program at the Children's Hospital Westmead.

From birth to maturity – the narratives of ward grandparents, families and staff working together over 20 years at Royal Alexandra Hospital for Children.

Mrs Diana Carmody and Lyn Biviano, The Children's Hospital at Westmead. NSW

17.2 > Hand in Hand: Partnerships in a Hospital Ward Grandparents Program.

This presentation will explore the possibilities of partnership in paediatric hospital services with particular emphasis on the role of caring citizens in service development.

Justin Duggan, Sydney South West Area Health Service. NSW

17.3 > Family Support Volunteers – new volunteer role in Children, Youth & Women's Health Service.

This paper will outline the development and implementation of the Family Support Volunteer role in Children, Youth & Women's Health Service and discuss the strategies used to overcome barriers and the benefits for families and children.

Ms Judy Underdown, Children, Youth & Women's Health Service. SA

17.4 > A Practical Approach to Supporting Carers.

An outline of the work of the Carer Support Program at the Children's Hospital at Westmead.

Ms Katherine Stone, The Children's Hospital at Westmead. NSW

Session 18. Norfolk Room

The MAP: Plotting a different journey - alternate care options
Chair – Anne Burke

18.1 > Acute care in the community – how is this achievable? This paper describes the programs, models of care and strategies implemented to ensure that Victoria children with complex medical care needs can be cared for in the community.

Nina Hardcastle, Cathy Matthews, The Royal Children's Hospital, Melbourne. Vic

18.2 > Evaluation of an Ambulatory Care Coordination Program For Children with Chronic Disease in WA.

Overview of the Paediatric Ambulatory Care Service in WA and research findings related to evaluation outcomes of the Ambulatory Care Coordination Program.

Mrs Sue Peter, Princess Margaret Hospital, Child and Adolescent Health Service. WA

18.3 > The Dilemmas of providing a Paediatric Home Care Service to Children and Adolescents with complex medical needs in Hobart Tasmania.

Presentation will describe how we manage children and adolescents at home with complex medical conditions in a small centre.

Miss Janine Sawford, Royal Hobart Hospital. TAS

18.4 > Continuity of Care in Child and Family Health Nursing Care.

Discusses a pilot project, conducted in the Hunter New England Area Health Service, NSW, aimed at improving continuity of care in child and family health nursing, and outlines the impact of the process and findings of the study on future family care and nursing practice.

Dr Diana Keatinge, Hunter New England Health and University of Newcastle. NSW

Session 19. Cutler Room

The MAP: The road map for families of children with chronic illness.
Chair – A/Prof. Helen Woollett

19.1 > There's No Such Thing As A Silly Question – a practical guide for families living with a child with chronic illness, disability, mental illness or a life-threatening condition. This presentation aims to share the process and collaborative learning of parents and health professionals who initiated, authored, edited, lobbied and produced this 110 page guide for parents, caregivers, health professionals and the wider community.

Lisa Evans, parent of a child with Spinal Muscular Atrophy and Registered Nurse; Camille Heagney, Very Special Kids and Anne Augustine, Arthritis Victoria and Monash Medical Centre. All presenters are also members of the interACT Committee. VIC

19.2 > Identifying complex care needs of children and their families in a Regional Acute Paediatric Setting.

Discussion of family centered negotiated care, with a holistic whole of life approach to Paediatric care of children with chronic and complex needs.

Ms Claire Cox, Queensland Health, Redcliffe Hospital, Paediatric Unit. QLD

19.3 > Children with a disability – do health care professionals have the educational preparation to care for them?

Comparing & contrasting the results of a Needs Analysis conducted with parents/carers of a child with a disability and health professional education providers.

Dr Jennifer Fereday, Dept. Nursing & Midwifery Research & Practice Development, Children, Youth & Women's Health Service SA.

19.4 > Running twice as fast in the context of education and learning: children and young people experiencing chronic health.

This presentation will provide contemporary strategies for implementing an education support service for children and young people with chronic health conditions, highlighting challenges and achievements, and identifying future directions.

Frances Burns, Rachel Meade, Royal Children's Hospital Education Institute. VIC

Session 20. Barton Room

The MEASURE: Setting new standards.
Chair – Prof. David Bennett

20.1 > Developing National Standards For The Care Of Children And Adolescents In Health Services. The presentation will describe the development of national standards for Australian health services that aim to facilitate the provision of high quality care for children and adolescents.

Dr Sharon Goldfeld, Centre for Community Child Health Royal Children's Hospital. VIC

20.2 > Improving hand hygiene practice in a paediatric setting. This presentation outlines the challenges faced and the interventions that were implemented to achieve higher compliance to hand hygiene practice.

Mr Ahmed Jamal, The Children's Hospital at Westmead. NSW

20.3 > Why can't I decide? Health care treatment for young people.

The joint presentation and paper outlines the major issues arising from the current law regulating consent for the medical treatment of young people.

Kieran Pehm, Commissioner, Health Care Complaints Commission and Peter Hennessy, Executive Director, NSW Law Reform Commission. NSW

20.4 > Reducing surgical site infections in the paediatric neurosurgical patient. This presentation demonstrates that by closing an identified gap between the available evidence and clinical practice, infection rates in children admitted for insertion of Ventricular Peritoneal shunts and External Ventricular Drains can significantly be reduced.

Gabrielle O'Grady, The Children's Hospital at Westmead. NSW

Afternoon Tea 3pm - 3:30pm

Closing plenary - 3.30pm to 5pm. Ballroom

Chair – Prof. Les White

- Dr Elisabeth Murphy NSW Health. Child Health - whose responsibility? *The radical reorientation of policy and practice in Child Health services over the last decade will be discussed in the context of working in partnership with parents.*
- Keynote Address – Dr Christine Bennett Commissioner National Health & Hospitals Reform Commission
- LAUNCH National Standards – Gillian Calvert NSW Commission for Children & Young People
- Response – Jenny Proimos RACP Division Paediatric and Child Health
- Closing and thanks – Presidents AWCH and CHA

3:30
-
5pm

5.30pm - CHA Annual General Meeting (Members only) – Norfolk Room

Conference Program Wednesday 19th November 2008

Half Day Workshops

No lunch is included – morning or afternoon refreshments are included.

AM
9am to 12 noon

Workshop A

Dr Charlie Homer

Quality and Safety workshop - System level measurement and readiness for transformation.

For primarily a hospital focused group, a workshop on "System level measurement and readiness for transformation." This will address how to assess the overall performance of your hospital as a system rather than the individual programs and components, and how to determine whether you are well positioned to make quantum leaps in performance.

Facilitator – Dr Jonny Taitz

Workshop B

Engaging with children and young people.

People map and measure: Doing it all. An interactive workshop about what research and common sense tells us are the elements of well being.

This workshop will take people through a process of how the elements of wellbeing can be actively enhanced in work with individuals, groups and families and how this can be measured. The workshop will actively explore people, map and measure through a blend of movement, drawing, discussion and theatre activities.

Peter Slattery has worked in health and community work for some 30 years with those having a hard time of life. He continues to do this work freelance throughout Australia and overseas and constantly finds himself on a quest both to understand more about what helps people flourish in life, and secondly to find exciting and unusual ways of doing this work.

Facilitators – Michelle Taylor and Anne Cutler

PM
1.30pm to 5pm

Workshop C

Paediatric Clinical Guidelines – a session for clinician managers and quality improvement coordinators to collaborate on paediatric guidelines development and implementation.

This Workshop will explore current Clinical Practice Guidelines initiatives occurring at the national level and then deal with Clinical Practice Guideline development, adaptation and implementation at the local level in paediatrics.

The Group will then workshop how paediatric hospitals and units can best work together to access and synthesise evidence, develop/adapt guidelines and apply in practice.

Facilitator – Phil Robinson – CHA

Workshop D

Dr Karen Wayman – Family Centred Care

Building an Effective Parent Participation Program to Diffuse Family Centered Care in your Health Care Setting

Attendees will trend their health care setting and determine best approaches to structuring their FCC parent participation program. The following levels of parent participation will be discussed in terms of recruitment, screening, training & supervision.

The 3-tier parent participation program

- The Advisory Parent
- The Parent Partner
- The Parent Leader

Utilizing this approach—we will discuss best strategies to diffuse family centered care in your institution. The following "diffusion" mechanisms will be discussed:

- Family Advisory Councils
- Quality Improvement Projects
- Patient Safety Initiatives
- Service-Line/Unit Programs

Facilitator – Lizzy Harnett

Poster Presentations

Poster Presentations will be on display throughout the conference and a special interactive 'show and tell' session with poster presenters in attendance is Monday 17 November at 6.30pm to 7.30pm with pre-dinner drinks and canapés.

- 1. Managing demand and wait times: A way forward.** Use of workforce modeling to predict reductions in waitlists and to manage demand. Lynette Adams Child Development Program, Royal Children's Hospital, Brisbane QLD
- 2. CHARLI the silent achiever.** This interactive presentation will describe the system for reviewing, documenting & sharing information on improvement activities, special achievements, plans & much more which has been built by The Children's Hospital at Westmead. Kay Babalis, The Children's Hospital at Westmead NSW
- 3. GESCHN Allied Health Secondment Program.** A discussion of outcomes from the Sydney Children's Hospital and GESCHN Allied Health Secondment Program, aimed at enhancing the knowledge and skills of allied health professionals in the tertiary component of their paediatric caseload. Ruth Pike and Virginia Binns, South Eastern Sydney & Illawarra Area Health Service NSW
- 4. Nepean Hospital Bushbabies Programme.** This poster describes the Bushbabies programme at Nepean Hospital, a follow-up service for NICU graduates which seeks to monitor infant motor development and to educate and support parents/carers. Carol Blair, Nepean Hospital NSW.
- 5. Paediatric Puzzler - an interactive learning and evaluation strategy.** Using an interactive game to engage, educate and consolidate. Rebecca Bundy, Royal Children's Hospital & Health Care District QLD
- 6. Unique transitional Journey of Cystic Fibrosis patients at John Hunter Children's Hospital.** A poster describing the unique transitional journey of patients with Cystic Fibrosis at John Hunter Children's Hospital. Linda Cheese, John Hunter Children's Hospital NSW
- 7. Heart Beads: The creation of a child's journey.** The Heart Beads Project aims to enrich the experience of the cardiac children at the Children's Hospital, Westmead by rewarding them with distinctive beads specific to each procedure or treatment. Kate Dengler and Gabbi Scarfe, The Children's Hospital at Westmead NSW.
- 8. A Training Curriculum of Clinical Interventions in Child Mental Health & Intellectual Disability.** The Poster presents the results of a stakeholder survey on the views of clinicians on core clinical interventions for inclusion in a training curriculum for clinicians working with children with mental health issues and intellectual disability. Dr David Dossetor, The Children's Hospital at Westmead NSW
- 9. Re-evaluating Health Service Provisions to Children in Out of Home Care; Findings from Preliminary Child Health Passport Research in Brisbane, Australia.** This poster overviews a research project examining the health needs of children in care and outlines relevant service implications arising from the results of the study. Karen Rissel, Melissa Faulkner Child Advocacy Service, Royal Children's Hospital & Health Service District, QLD
- 10. The use of art to improve the hospital experience.** A video presentation will demonstrate how the involvement of young patients (students) in the creation and display of shared and individual artworks can enhance their hospital stay. Marianne Fraser, Department of Education and Training St George Hospital School NSW
- 11. Paediatric Quality Use of Medicines in the hospital setting: juggling the science, policy and practice.** This poster outlines the activities and outcomes of the Paediatric Therapeutics Program at University of New South Wales and Sydney Children's Hospital in bridging gaps in paediatric Quality Use of Medicines (QUM), including initiatives to improve paediatric medication safety. Dr Madlen Gazarian UNSW and Sydney Children's Hospital, Randwick and Mrs Linda Gaudins, Medication Safety and QUM Pharmacist, Paediatric Therapeutics Program University of New South Wales and Sydney Children's Hospital NSW
- 12. Reducing Central Venous Catheter related Bloodstream Infections in a Paediatric Intensive Care Unit.** This presentation provides an overview of the strategies adopted as part of a national collaborative to reduce Central Venous Catheter related Bloodstream Infections. Elizabeth Harnett, The Children's Hospital at Westmead NSW
- 13. Queensland Healthy Hearing Program: Medical and Family Support Services.** The development and implementation of resources, pathways, and multidisciplinary services for children with permanent hearing loss in Queensland will be described. Bronwyn McLellan, Child Development Program, Children's Community Health Services QLD.
- 14. PatCH Patient Held Record - Improving communication between professionals and families.** The PatCH Patient held record provides both written and electronic details of each child's care in a standardized format for easy and unambiguous reference on presentation at any ED, IP or clinic setting. Claire Howe, The Canberra Hospital ACT

Poster Presentations

- 15. Redkite Telegroups: community support for young people diagnosed with cancer and their family members as they transition off treatment and integrate back into their local community.** Telegroups are part of the range of innovative and accessible community services Redkite has developed to provide support for young people diagnosed with cancer and their family members as they transition from acute hospital care back home and to their local community. Leigh Kurth, Redkite QLD.
- 16. Youth At Risk: Young Men At Risk Model Project.** Agnes Lee Merick, Department Of Youth & Sports Development Vanuatu.
- 17. Healthy Families a TEAM approach “together everyone achieves more”.** A collaborative network promoting healthy family lifestyle strategies addressing locally identified community needs. Tammy Makin, Shoalhaven Childhood Obesity Network NSW
- 18. Addressing the needs of Children’s Heart Disease.** HeartKids Australia – The public face of Children’s Heart Disease – the greatest killer of young children in Australia. Neil McWhannell, HeartKids Australia NSW
- 19. A Personal “Web Clinic” – The Way Forward for Food Allergy Sufferers.** Can a “Web Allergy Clinic” take the place of a classical clinical consultation? We present a comparison study. Dr Rodney Ford, Christchurch New Zealand.
- 20. Livewire: an online social network exclusively for young people living with a serious illness or disability.** The role of social networks in promoting positive social and emotional outcomes in young people living with health issues. Felicity McMahon, Starlight Children’s Foundation VIC.
- 21. “Express Yourself”: Art as Therapy with Cystic Fibrosis In-patients.** A Poster of the responses, both visual and verbal, of cystic fibrosis patients to their art therapy program at the John Hunter Children’s Hospital. Julie Nicols, John Hunter Children’s Hospital NSW
- 22. ANCEP- Innovative Documentation Approach.** Description of an innovative project to improve the nursing documentation practices and the quality of health care delivered to children and young people in Starship Hospital. Rebecca Nicol, Starship Children’s Hospital Auckland New Zealand
- 23. A Virtual Tour of a Trip to theatre at the Sydney Children’s Hospital.** This poster describes the background, features and evaluation of the virtual tour which aims at preparing children and families for surgery. Michelle Perrin, Sydney Children’s Hospital Randwick NSW
- 24. Implementation of a graduation ceremony at a children’s hospital to promote transitional care.** This paper discusses the process and outcomes of implementing a Graduation Ceremony for children with chronic illness who are moving on to adult oriented services. Michael Plaister, Sutherland Hospital NSW.
- 25. Ronald McDonald House Charities – More Than Just The Bricks.** The presentation will outline the breadth of services offered by Ronald McDonald House Charities to both children and their families and will focus on the new program, Ronald McDonald Family Rooms that provides families attending a sick child a haven within the hospital. Barbara Ryan, Ronald McDonald House Charities NSW.
- 26. Isolation Nursing: A positive experience for families.** A family centered care approach to nursing children in isolation. Sally-Anne Smith, The Children’s Hospital at Westmead NSW
- 27. Childrens participation in organized extra-curricular activities: the Portuguese reality and developmental correlates.** A study about the developmental importance of child participation in organized extra-curricular activities. Vitor Teixeira, University of Porto – Faculty of Psychology and Educational Sciences Portugal.
- 28. The On-Line Paediatric Junior Medical Officer Orientation Program.** We discuss the development, implementation and early outcomes of an On-Line orientation program that delivers common paediatric orientation modules to Junior Medical Officers (JMOs) attached to GESCHN (Greater Eastern & Southern Child Health Network) hospitals in NSW; these basic paediatric modules complement their face-to-face orientation to the Paediatrics Department of their hospital. Richard Thode, Greater Eastern & Southern NSW Child Health Network (GESCHN) NSW.
- 29. Developing the child care workforce through collaboration: friend or foe?** The aim of this paper is to present the ‘lived experience’ of collaborative working between the Faculties of Health and Social Care and Education to deliver a Foundation Degree in Children and Families which facilitates the development of appropriate skills and knowledge to support role development within the children’s workforce. Claire Thurgate, Canterbury Christ Church University UK.
- 30. Advancing Paediatric Risk, Safety and Quality Improvement Outcomes.** Ruth Willis, Flinders Medical Centre SA
- 31. Creating a child friendly Emergency Department.** A poster presentation outlining newly introduced visual support resources to support children’s understanding of common medical procedures. Ngairé Wood, Sydney Children’s Hospital, Randwick NSW



AWCH Ph: + 61 (2) 9817 2439
E-mail: awch@awch.com.au



CHA Ph: + 61 (2) 6230 4400
E-mail: echatham@wcha.asn.au